

**In This Issue:**

- *New Committee Structure Update*
- *2012 Annual Conference Info*
- *Kansas Statewide Career Fair*
- *New Member Spotlight*

Linking Kansas Employers and Higher Education Career Services Personnel

**President's Corner***Susan Wade**Baker University*

Spring 2012 has arrived! Whew, we made it! I don't know about you, but I've been wondering what happened to winter this year? Each week from December to March, I was sure the worst would hit soon and hard! But with flowers and trees in full bloom, we can probably relax and enjoy what has been unseasonably warm and wonderful. With the economic outlook the best in recent years, maybe we can begin to relax and enjoy a job climate that's welcoming as well.

I hope that you enjoyed the 2011 KACE Annual Conference last December. We definitely had fun planning it starting with the World War I Museum tour with the focus on museum careers on Wednesday to Friday morning's motivating speaker, Ottawa University's President, Dr. Eichner. I hope you'll agree the conference had something for everyone; from employers to career services. The 2011 conference planning committee was 'jazzed' to facilitate a conference hosted by Johnson County Community College. We were all spoiled with the Regnier Center facilities and the excellent service provided by the staff there. Holding the conference at a local college enabled KACE to provide a quality event AND be fiscally responsible. We hope you benefited from the conference and came away with new ideas to implement in your offices, with your students and candidates.

One of the ways that KACE plays an important part in my professional development is the friendships I have made with members who are incredibly generous with their advice and encouragement. Over the years, they have shared best practices, programming and teaching ideas, their networking contacts, and are always supportive. I have benefited in so many ways from being a member and hope you'll experience the same thing.

So how can you benefit from KACE? Get involved. Come to the conference, join a committee, write an article for this newsletter or send a message on the ([www.KACEweb.org](http://www.KACEweb.org)) listserv. Give of your time and talent. Why? Because you have ideas, experiences and wisdom to share. As I write this, I am inspired by how KACE members have volunteered to do that very thing as we prepare for this year's events. The 2012 KACE conference planning committee led by LeAnn Cunningham is busy creating an exciting, relevant and informative conference. We will be convening in Topeka, November 7 - 9 at the Capital Plaza Hotel and it promises to be a conference with new, emerging ideas, cutting edge trends and career building experiences. Invite a friend and attend!



## 2012 KACE Leadership

### Officers:

*President*

Susan Wade, Baker University

*President-Elect*

LeAnn Cunningham,  
Johnson County Community College

*Past President & Historian*

Jessica Ohman, Butler Comm. College

*Secretary*

Anne Belote, Rockhurst University

*Treasurer*

James Barraclough, Washburn University

*Employer Relations Representative*

Raedawn Johnson, Garmin International

*College Relations Representative*

LaToya Farris, Kansas State University

*Technology Officer*

Melissa Johnson, The Univ. of Kansas

### New Committee Structure

At the last annual conference KACE members voted to approve a new, streamlined committee structure. Ten standing committees were consolidated into six committees. The Annual Conference Planning, Site Selection, Bylaws, and Special Events committees remained the same while two new committees were formed.

The new Technology and Communication Committee combines the former Technology and Public Information committees. This committee will develop and distribute public information and marketing materials, oversee website and social media efforts, and assist event planning committees with public relations and marketing.

The new Membership Development Committee combines the former Awards and Recognition, Nominating, and Membership committees. This committee will coordinate nominations and review candidate information for awards and recognition, select a slate of nominees for elective positions, and develop initiatives to retain, engage, and involve members.

### Committee Chairs:

*Annual Conference Planning*

LeAnn Cunningham  
Johnson County Community College

*Bylaws*

Loretta Patterson, Butler Comm. College

*Membership Development*

Stacey Stokes  
Northwest Missouri State University

*Site Selection*

Wendy Shoemaker, The Univ. of Kansas

*Special Events*

Erin Wolfram, The University of Kansas

*Technology and Communication*

Melissa Johnson, The Uniiv. of Kansas

Do not worry if you have  
built your castles in the air.  
They are where they should  
be. Now put the foundations  
under them.

Henry David Thoreau



# To THE STARS



## The 2012 KACE Conference is Coming—with Dr. Phil Gardner!

Anne Belote  
Rockhurst University

Mark your calendar for the Annual Conference! Once a year KACE members gather together to network, share best practices, and learn from fantastic presenters.

**What:** 2012 KACE Conference  
**When:** November 7-9, 2012  
**Where:** Capitol Plaza Hotel, Topeka, Kansas

This year the conference theme is *Ad Astra: To the Stars*. The keynote speaker will be **Dr. Phil Gardner**, a star among career development researchers. Additional presentations and breakout sessions will focus on internships, veterans, nonprofits, Kansas legislation for higher education, and the state of the Kansas workforce. And of course there will be plenty of opportunities to network with and learn from colleagues.

Aim for the stars, and attend the 2012 Annual Conference!

### 2012 Conference Planning Committee:

- LeAnn Cunningham, Chair, *Johnson Co. Community College*
- James Barraclough, *Washburn University*
- Kelly Burns, *Baker University*
- June Coleman, *Emporia State University*
- LaToya Farris, *Kansas State University*
- Melissa Johnson, *The University of Kansas*
- Raedawn Johnson, *Garmin*
- Kerri Keller, *Kansas State University*
- Kent McAnally, *Washburn University*
- David Milford, *Emporia State University*
- Pamelia Parker, *State Street*
- Jolene Phillips, *The University of Kansas*
- Wendy Shoemaker, *The University of Kansas*
- Ann Van Zee, *Harvesters*
- Susan Wade, *Baker University*
- Susan Webb, *Ottawa University*



**Kansas Statewide Job Fair, Tuesday, April 24 in Dodge City***Phyllis LaShell, Kansas Department of Commerce*

**KANSASWORKS**, Kansas Economic Development Alliance (KEDA) and Employer Support of the Guard and Reserve (ESGR) are hosting the annual statewide job fair on Tuesday, April 24, at United Wireless Arena, from 2:30 to 6:30 p.m. The event, which is free, will be open exclusively to military personnel and veterans at 2:30 pm and to the general public at 3:30 pm.

A variety of industries are being encouraged to attend including, healthcare, energy, bioscience, manufacturing, agriculture and more. Booth space is available for employers interested in connecting with qualified job seekers from the region. Registration for employers is \$100 and may be done on-line at **KANSASWORKS.com**. Registration fee includes one eight foot table, two chairs, wireless internet capability, refreshments and two meals.

The career fair is free and open to everyone. Job seekers are encouraged to bring resumes and dress professionally as on-site interviews will be available. The **KANSASWORKS** mobile center will be onsite to help with resume preparation and online job applications. Society for Human Resource Management of Southwest Kansas will also have a booth providing resume review assistance. Public transportation will be available in Dodge City at no cost.

For more information contact Phyllis LaShell at (785) 577-4610 or email [plashell@kansasworks.com](mailto:plashell@kansasworks.com).

**New Member Spotlight: Employer**

**Ann Van Zee**, Community Outreach Programs Manager/AmeriCorps Program Director  
*Harvesters—The Community Food Network*

**KACE Involvement**

*After I attended the terrific workshop on internships last summer, our organization joined KACE. At the 2011 annual conference I signed up for the 2012 conference planning committee. It's been a great fit for me professionally and personally—because Harvesters has a facility in Topeka and I really enjoy being part of the team responsible for another great conference.*

**What do you like about KACE?**

*The opportunity to connect with such a diverse group! It's been very rewarding to get to know everyone from the different schools and organizations, and see how the conference comes together.*

**Educational Background**

*Bachelor of Arts from Cornell College (Politics, Russian and Russian Studies)  
Master of Nonprofit Management from Regis University*

**What advice would you give students seeking careers in nonprofits?**

*I think it's wonderful that undergraduates have the opportunity to major in or have a concentration in the actual field of nonprofit work. They can also enhance their studies with internships, volunteering, or job shadowing. I do hope students understand that it's absolutely possible to combine a passion for a cause with a paying career, even if you don't specifically have a nonprofit degree.*

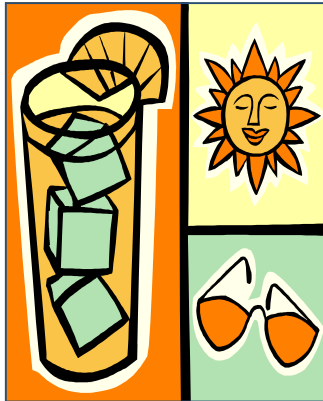
**Interesting Facts About You**

*For fifteen years, as both a paid and unpaid staff person, I facilitated volunteer engagement to support Department of Defense family programs and community-based social services, and had the opportunity to serve on and lead the governing boards of several all-volunteer nonprofits. During those years, I moved 10 times – including two different assignments to Germany, where I learned to appreciate many different styles of various beverages.*



Summer is almost here...

Watch your e-mail for details about the KACE Summer Workshop!



**New Member Spotlight: Career Services**

**Lisa Parson**

*Director of Career Services, First Year Program, and Academic Support at Sterling College*



**KACE Involvement:**

*I joined KACE about a year ago and attended my first Annual Conference in November. I had a wonderful experience there and wanted to get more involved in the organization, which prompted me to join the Communication & Technology Committee.*

**Educational Background:**

*Master of Science in Counseling and Student Development  
Kansas State University (2010)*

*Bachelor of General Studies with emphases in Organizational Leadership and Human Services  
Fort Hays State University (2006)*

**Favorite Aspect of Career Services:**

*I enjoy witnessing students' transformations and success stories. It's fun to help students polish their resumes or to share their excitement when they secure a great internship or job. I'm blessed to be a part of the whole process.*

**Hobbies:**

*I love to read, bake, and spend time with family and friends. I also enjoy outdoor activities like target shooting, fishing, and camping.*

**Interesting Fact About You:**

*I am a three-time pie eating contest champion.*

**Your Newsletter Contributions are Encouraged!**

Your contributions keep the newsletter fresh! Thank you to those who contributed to this newsletter! Please feel free to share ideas and stories with Anne Belote ([anne.belote@rockhurst.edu](mailto:anne.belote@rockhurst.edu)).